

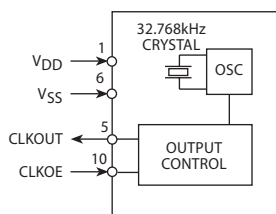
PAD	CONNECTION	PAD	CONNECTION
1	Supply (VDD)	6	Ground
2	Not connected	7	Not connected
3	Not connected	8	Not connected
4	Not connected	9	Not connected
5	Frequency output (CLKOUT)	10	FOUT output enable (CLKOE)

Scale 3:1

## Features

- ▶ **Tight frequency tolerance**
- ▶ **Low power consumption**
- ▶ **Low ageing**
- ▶ **High shock and vibration resistance**
- ▶ **Miniature ceramic SON 10-pin package**

## Block Diagram



## Specifications

Parameters	Product	Option Codes
	OV1564C2	
<b>Frequency:</b>	32.7680kHz	■
<b>Calibration tolerance:</b>	±10ppm ±20ppm Other	□ ■ □ A B specify
<b>Turnover temperature (T<sub>0</sub>):</b>	+25°C ±5°C	■
<b>Frequency / temp coefficient:</b>	-0.035ppm/°C <sup>2</sup> ±10%	■
<b>Operating temperature range:</b>	-40 to +85°C	■
<b>Storage temperature range:</b>	-55 to +125°C	■
<b>Supply voltage (V<sub>DD</sub>):</b>	Operable from 1.0 ~ 5.5V	■
<b>Supply current:</b>	1.5µA typ, 2µA max (V <sub>DD</sub> = 3V, no load)	■
<b>Supply current (backup mode):</b>	0.28µA max, 0.7µA max (V <sub>DD</sub> = 3V, output disabled)	■
<b>Driving ability:</b>	CMOS	■
<b>Start up time:</b>	350ms typ, 700ms max (V <sub>DD</sub> = 3V)	■
<b>Enable / disable function:</b>	Tristate (control via pad 10)	■
<b>Ageing:</b>	±3ppm max first year	■
<b>Shock and vibration resistance:</b>	±5ppm, 5,000g, 0.3ms, ½ sine ±5ppm, 20g, 10.0 ~ 2,000Hz	■ ■
<b>Soldering condition:</b>	Reflow, 260°C, 20 sec max	■

■ Standard. □ Optional - Please specify required code(s) when ordering

## Enable / Disable Function

Input (pad 10)	Output (pad 5)
Open	Enabled
'1' level	Enabled
'0' level	High Impedance

## Ordering Information

Product + option code

eg: **OV1564C2/B** ±20ppm (standard)

Option code X (eg OV1564C2/X) denotes a custom spec.

- ◆ Available on T&R - 1.5k, 3.5k or 7k pcs per reel.
- ◆ Refer to our website for T&R and soldering details.