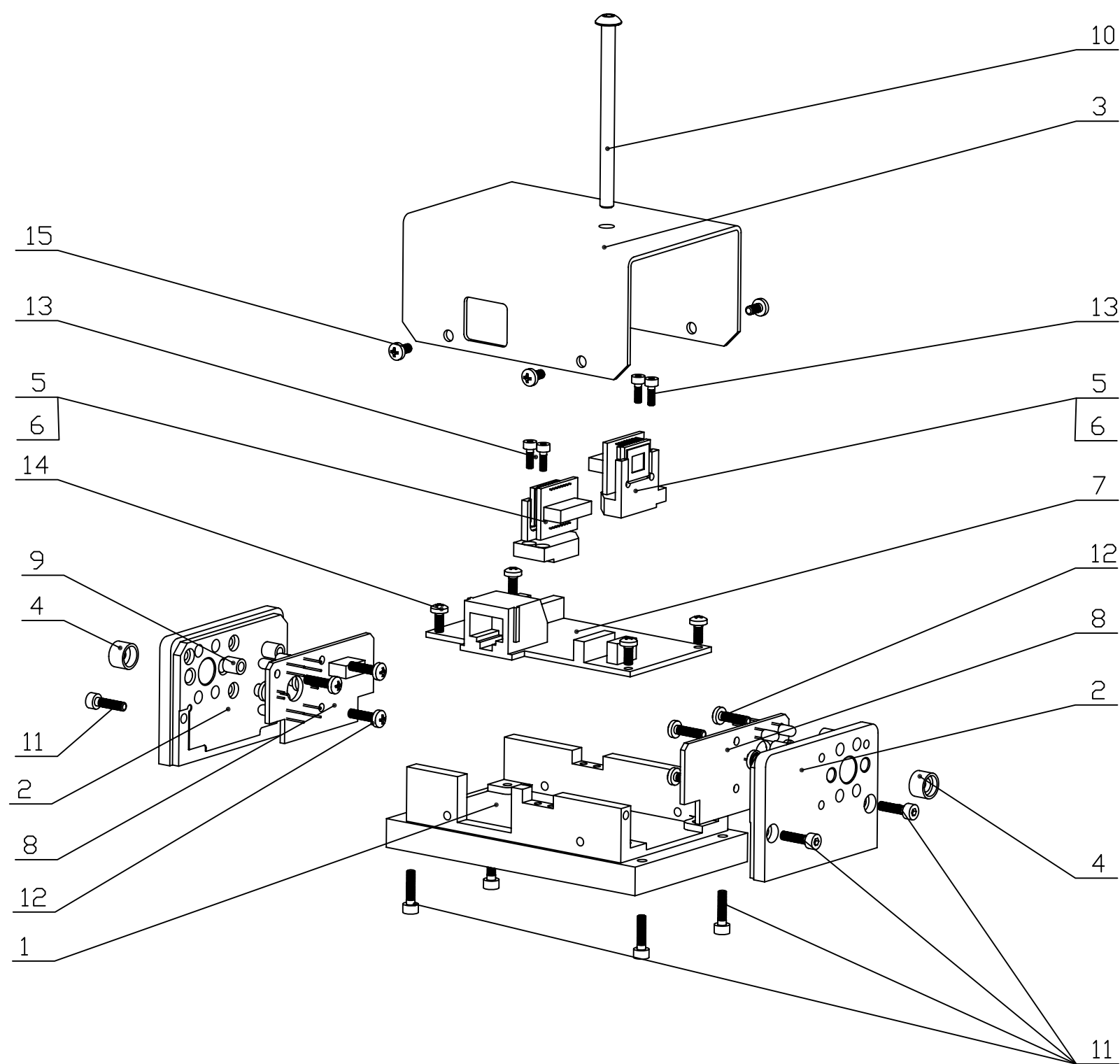


REVISIONS				
ZONE	REV	DESCRIPTION	DATE	APPROVED



FIND/REF.#	QTY.	U.M.	PART NAME	MATERIAL	PART DESCRIPTION	REF. SHEET/DWG.
15	4	EA	SCREW	304 ST/STEEL	PAN HEAD, M2.5x.45 Thread, 5mm Length	MMC# 92000A103
14	4	EA	SCREW	304 ST/STEEL	PAN HEAD, M2.5x.45 Thread, 6mm Length	MMC# 92000A104
13	4	EA	SCREW	304 ST/STEEL	SOCKET HEAD, M2x.4 Thread, 6mm Length	MMC# 91292A831
12	6	EA	SCREW	304 ST/STEEL	PAN HEAD, M2.5x.45 Thread, 10mm Length	MMC# 92000A106
11	8	EA	SCREW	304 ST/STEEL	SOCKET HEAD, M2.5x.45 Thread, 10mm Length	MMC# 91292A014
10	1	EA	SCREW	304 ST/STEEL	SOCKET HEAD, M4x.7 Thread, 55mm Length,	MMC# 91292A268
9	6	EA	SPACER	NYLON	4.5 mm OD, 5 mm Long, for M2.5 Screw Size	MMC# 93657A206
8	2	EA	CIRCUIT BOARD		SIDE BOARD	A3026L
7	1	EA	CIRCUIT BOARD		MAIN BOARD	A3025A
6	2	EA	CIRCUIT BOARD		CCD BOARD	A2076J
5	2	EA	CIRCUIT BOARD	ALUMINUM	BLACK ANODIZED	300.00.02.01
4	2	EA	LENSE HOLDER	BRASS	ASSEMBLY	500.10.01.00
3	1	EA	COVER	ALUMINUM	BLACK ANODIZED	300.00.00.02_01
2	2	EA	FLANGE	ALUMINUM	BLACK ANODIZED	300.00.01.01
1	1	EA	BASE	ALUMINUM	BLACK ANODIZED	300.00.00.01

PARTS LIST						
UNLESS OTHERWISE SPECIFIED:				PERMISSIBLE VARIATION IN INCH DIMENSIONS WITHOUT TOLERANCES		
				FABRICATION TOLERANCES		MACHINING TOLERANCES
1. DIMENSIONS ARE IN INCHES.				BELOW 12	±0.10	DECIMAL PLACES X & X.X X.XX X.XXX
2. MACHINE SURFACES TO BE FLAT, SQUARE, PARALLEL & CONCENTRIC WITHIN .001 FOR 5 INCHES OR .001 TIR AS APPLICABLE.				12 TO 60	±0.13	BELOW 18 ±0.015 ±0.010 ±0.005
3. MARK ALL DETAILS (EXEMPT COMMERCIAL PARTS) WITH DWG. & ITEM NUMBER.				60 TO 180	±0.20	18 TO 48 ±0.030 ±0.020 ±0.010
4. BREAK ALL SHARP CORNERS .01 x 45° CHAMFER.				DVER 180	±0.30	DVER 48 ±0.045 ±0.030 ±0.015
5. FILLETS SHOWN SHARP = .04 RAD.				ANGLE TOLERANCE ±0.5° ANGLE TOLERANCE ±0.1°		
6. TAPPED HOLES UNIFIED CLASS 2B THREAD, MIN DEPTH 1.5 x DIA.						
7. C/SINK BORED & REAMED HOLES 1/16 x 45°.						
8. CENTERS PERMISSIBLE.						
9. DO NOT SCALE DRAWING.						
10. ALL WELDING TO CONFORM TO LATEST A.W.S. STANDARDS						

DATE	BY	DESCRIPTION	DATE	BY	DESCRIPTION
04.11.21	AD	DRAWN			
	KH	CHECKED			
	KH	APPROVED			

**OSI**  
 TITLE: H-BCAM BLACK ASSEMBLY  
 SCALE: 1:1  
 PROJECT NUMBER: 300  
 DRAWING NUMBER: 300.00.00.00  
 SHEET: 1 OF 1  
 REVISION: A

