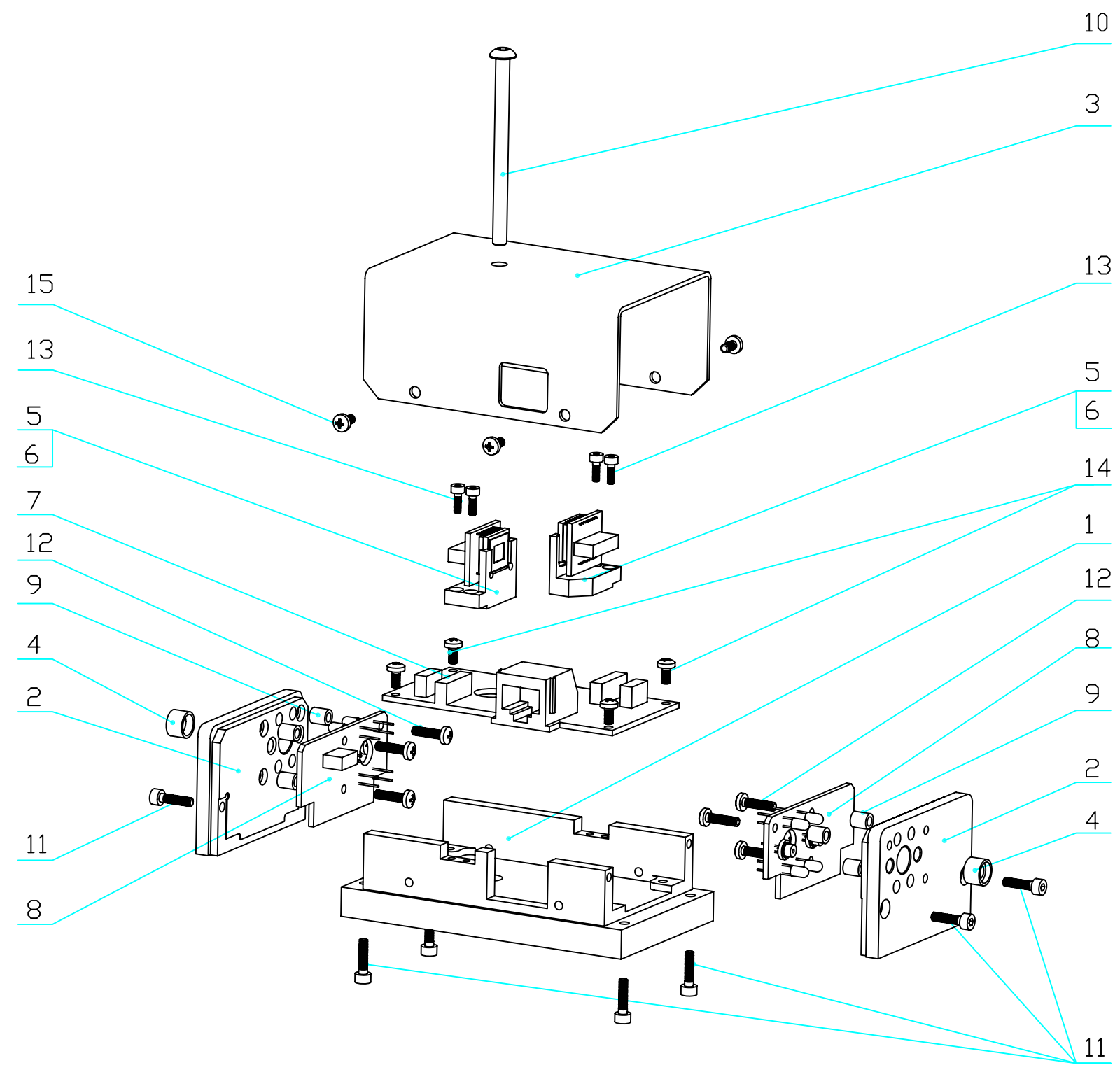


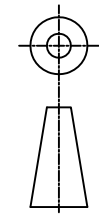
| REVISIONS | | | | |
|-----------|-----|-------------|------|----------|
| ZONE | REV | DESCRIPTION | DATE | APPROVED |
| | | | | |



| FIND/REF.# | QTY. | U.M. | PART NAME | MATERIAL | PART DESCRIPTION | REF. SHEET/DWG. |
|------------|------|------|---------------|--------------|---|-----------------|
| 15 | 4 | EA | SCREW | 304 ST/STEEL | PAN HEAD, M2.5x.45 Thread, 5mm Length | MMC# 92000A103 |
| 14 | 4 | EA | SCREW | 304 ST/STEEL | PAN HEAD, M2.5x.45 Thread, 6mm Length | MMC# 92000A104 |
| 13 | 4 | EA | SCREW | 304 ST/STEEL | SOCKET HEAD, M2x.4 Thread, 6mm Length | MMC# 91292A831 |
| 12 | 6 | EA | SCREW | 304 ST/STEEL | PAN HEAD, M2.5x.45 Thread, 10mm Length | MMC# 92000A106 |
| 11 | 8 | EA | SCREW | 304 ST/STEEL | SOCKET HEAD, M2.5x.45 Thread, 10mm Length | MMC# 91292A014 |
| 10 | 1 | EA | SCREW | 304 ST/STEEL | SOCKET HEAD, M4x.7 Thread, 55mm Length, | MMC# 91292A268 |
| 9 | 6 | EA | SPACER | NYLON | 4.5 mm OD, 5 mm Long, for M2.5 Screw Size | MMC# 93657A206 |
| 8 | 2 | EA | CIRCUIT BOARD | | SIDE BOARD | A3026R |
| 7 | 1 | EA | CIRCUIT BOARD | | MAIN BOARD | A3025B |
| 6 | 2 | EA | CIRCUIT BOARD | | CCD BOARD | A2076J |
| 5 | 2 | EA | CCD FRAME | ALUMINUM | BLUE ANODIZED | 200.00.02.01 |
| 4 | 2 | EA | LENS HOLDER | BRASS | ASSEMBLY | 500.10.01.00 |
| 3 | 1 | EA | COVER | ALUMINUM | BLUE ANODIZED | 300.00.00.02_02 |
| 2 | 2 | EA | FLANGE | ALUMINUM | BLUE ANODIZED | 200.00.01.01 |
| 1 | 1 | EA | BASE | ALUMINUM | BLUE ANODIZED | 200.00.00.01 |

| PARTS LIST | | | | | | |
|---|---------------------------------|-------|------------------------|--------|--------|--------|
| UNLESS OTHERWISE SPECIFIED: | | | | | | |
| FABRICATION TOLERANCES | | | MACHINING TOLERANCES | | | |
| 1. DIMENSIONS ARE IN INCHES. | BELOW 12 | ±0.10 | DECIMAL PLACES X & X.X | X.XX | X.XXX | |
| 2. MACHINE SURFACES TO BE FLAT, SQUARE, PARALLEL & CONCENTRIC WITHIN .001 FOR 5 INCHES OR .001 TIR AS APPLICABLE. | 12 TO 60 | ±0.13 | BELOW 18 | ±0.015 | ±0.010 | ±0.005 |
| 3. MARK ALL DETAILS (EXCEPT COMMERCIAL PARTS) WITH DWG. & ITEM NUMBER. | 60 TO 180 | ±0.20 | 18 TO 48 | ±0.030 | ±0.020 | ±0.010 |
| 4. BREAK ALL SHARP CORNERS .01 x 45° CHAMFER. | OVER 180 | ±0.30 | OVER 48 | ±0.045 | ±0.030 | ±0.015 |
| 5. FILLETS SHOWN SHARP = .04 RAD. | ANGLE TOLERANCE ±0.5° | | ANGLE TOLERANCE ±0.1° | | | |
| 6. TAPPED HOLES: UNIFIED CLASS 2B THREAD, MIN DEPTH 1.5 x DIA. | SURFACE TEXTURE $\sqrt{125}$ | | | | | |
| 7. C'SINK BORED & REAMED HOLES 1/16 x 45°. | TOLERANCES ARE NOT ACCUMULATIVE | | | | | |
| 8. CENTERS PERMISSIBLE. | | | | | | |
| 9. DO NOT SCALE DRAWING. | | | | | | |
| 10. ALL WELDING TO CONFORM TO LATEST A.S.S. STANDARDS | | | | | | |

| NEXT ASSY | QTY | DRAWING INFORMATION | | SIZE | SCALE |
|-----------|-----|---------------------|----------|----------------|----------|
| | | NAME | DATE | D | 1:1 |
| | | DRAWN AD | 04.10.21 | PROJECT NUMBER | |
| | | CHECKED KH | | 200 | |
| | | APPROVED KH | | DRAWING NUMBER | |
| | | | | 200.00.00.00 | |
| | | | | SHEET | REVISION |
| | | | | 1 OF 1 | A |



Open Source Instruments Inc.

OSI

TITLE
H-BCAM
BLUE
ASSEMBLY