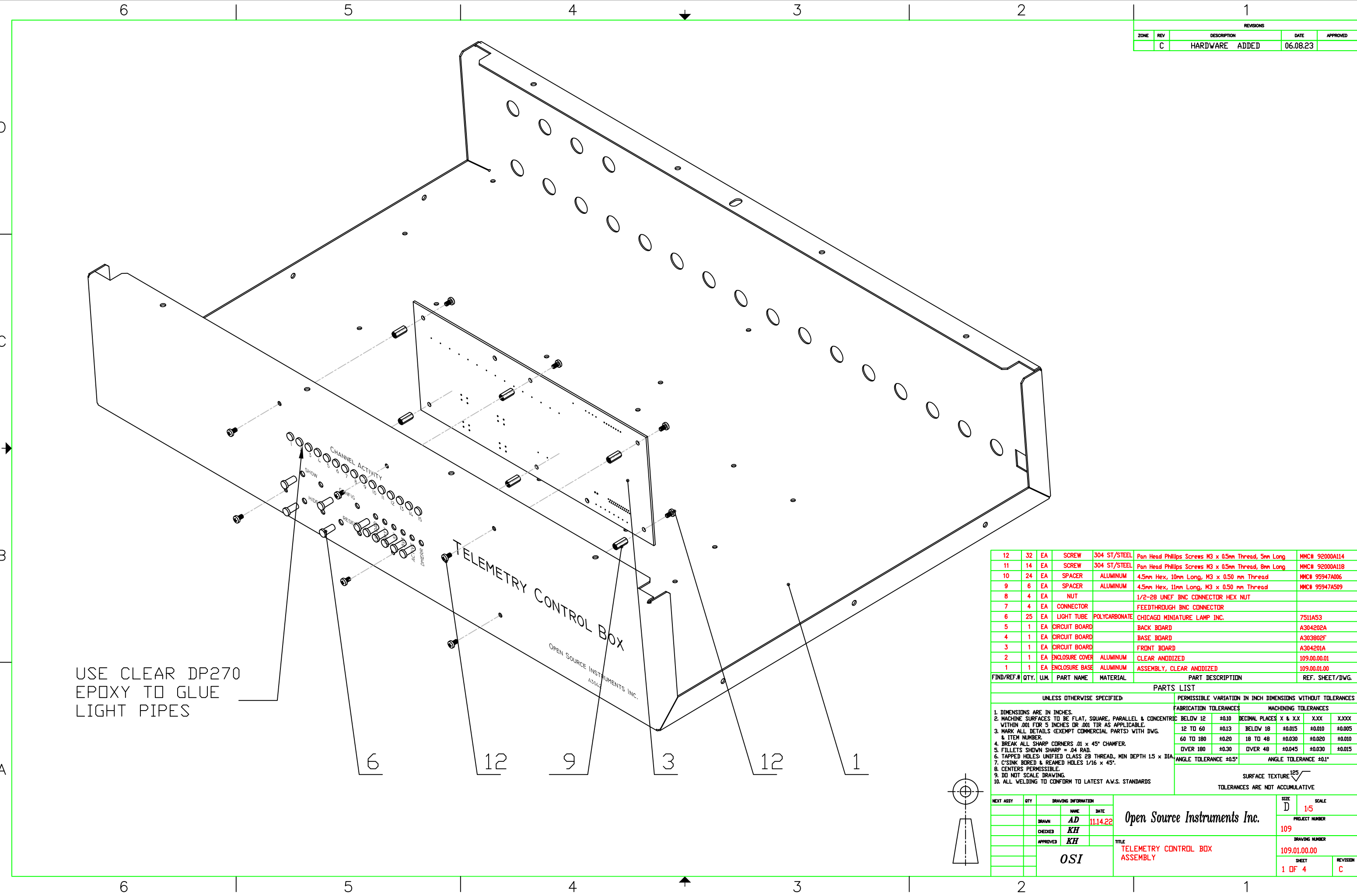


REVISIONS				
ZONE	REV	DESCRIPTION	DATE	APPROVED
	C	HARDWARE ADDED	06.08.23	



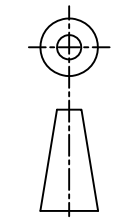
USE CLEAR DP270
EPOXY TO GLUE
LIGHT PIPES

TELEMETRY CONTROL BOX
OPEN SOURCE INSTRUMENTS INC.
A3042

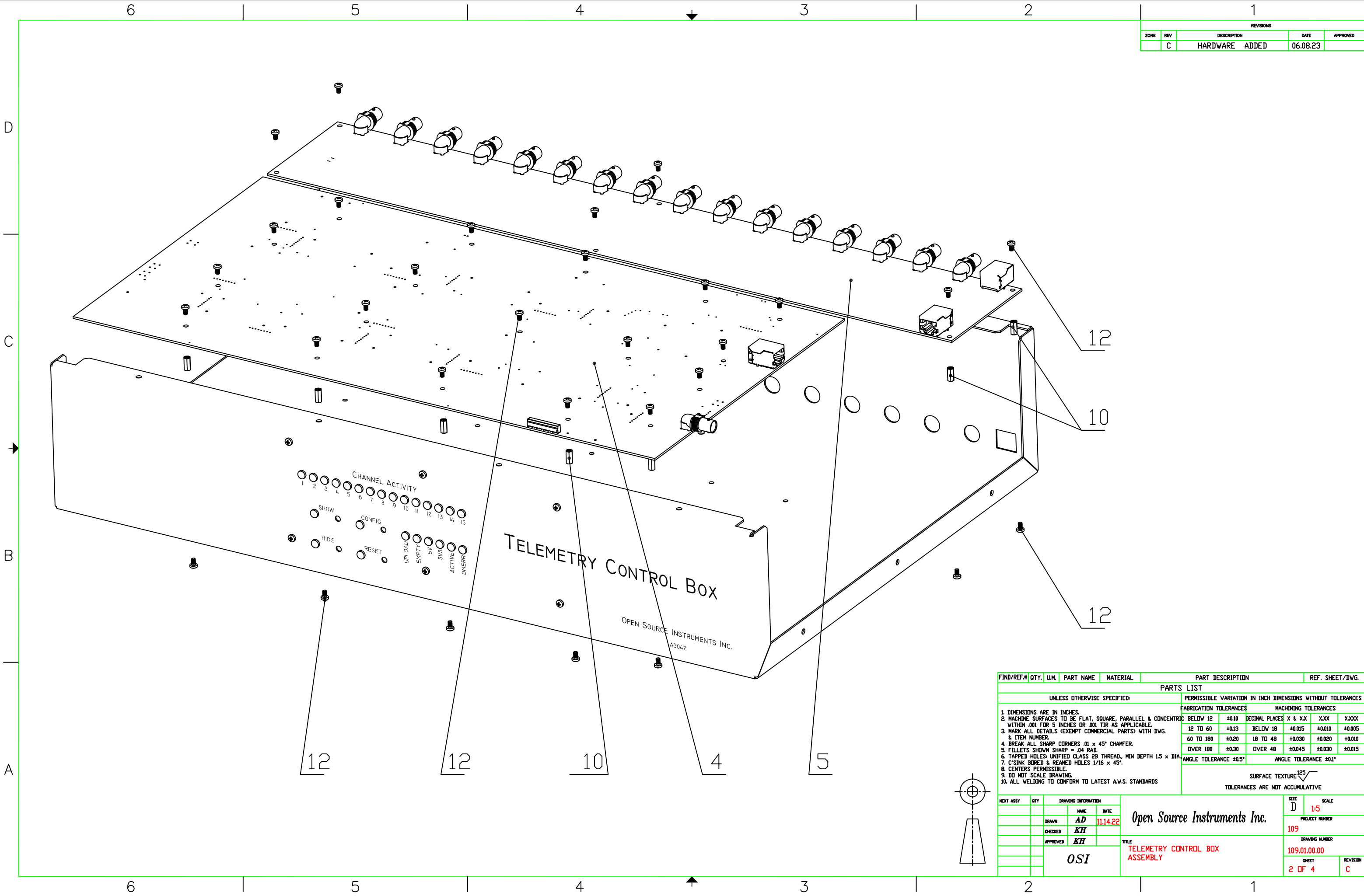
FIND/REF.#	QTY.	U.M.	PART NAME	MATERIAL	PART DESCRIPTION	REF. SHEET/DWG.
12	32	EA	SCREW	304 ST/STEEL	Pan Head Phillips Screws M3 x 0.5mm Thread, 5mm Long	MMC# 92000A114
11	14	EA	SCREW	304 ST/STEEL	Pan Head Phillips Screws M3 x 0.5mm Thread, 8mm Long	MMC# 92000A118
10	24	EA	SPACER	ALUMINUM	4.5mm Hex, 10mm Long, M3 x 0.50 mm Thread	MMC# 95947A006
9	6	EA	SPACER	ALUMINUM	4.5mm Hex, 11mm Long, M3 x 0.50 mm Thread	MMC# 95947A509
8	4	EA	NUT		1/2-28 UNEF BNC CONNECTOR HEX NUT	
7	4	EA	CONNECTOR		FEEDTHROUGH BNC CONNECTOR	
6	25	EA	LIGHT TUBE	POLYCARBONATE	CHICAGO MINIATURE LAMP INC.	7511A53
5	1	EA	CIRCUIT BOARD		BACK BOARD	A304202A
4	1	EA	CIRCUIT BOARD		BASE BOARD	A303802F
3	1	EA	CIRCUIT BOARD		FRONT BOARD	A304201A
2	1	EA	ENCLOSURE COVER	ALUMINUM	CLEAR ANODIZED	109.00.00.01
1	1	EA	ENCLOSURE BASE	ALUMINUM	ASSEMBLY, CLEAR ANODIZED	109.00.01.00

UNLESS OTHERWISE SPECIFIED:		PERMISSIBLE VARIATION IN INCH DIMENSIONS WITHOUT TOLERANCES			
		FABRICATION TOLERANCES		MACHINING TOLERANCES	
1. DIMENSIONS ARE IN INCHES.		BELOW 12	±0.10	DECIMAL PLACES X & X.X	X.XXX
2. MACHINE SURFACES TO BE FLAT, SQUARE, PARALLEL & CONCENTRIC WITHIN .001 FOR 5 INCHES OR .001 TIR AS APPLICABLE.		12 TO 60	±0.13	BELOW 18	±0.015 ±0.010 ±0.005
3. MARK ALL DETAILS (EXEMPT COMMERCIAL PARTS) WITH DWG. & ITEM NUMBER.		60 TO 180	±0.20	18 TO 48	±0.030 ±0.020 ±0.010
4. BREAK ALL SHARP CORNERS .01 x 45° CHAMFER.		OVER 180	±0.30	OVER 48	±0.045 ±0.030 ±0.015
5. FILLETS SHOWN SHARP = .04 RAD.		ANGLE TOLERANCE ±0.5°		ANGLE TOLERANCE ±0.1°	
6. TAPPED HOLES UNIFIED CLASS 2B THREAD, MIN DEPTH 1.5 x DIA.		SURFACE TEXTURE 125			
7. C/SINK BORED & REAMED HOLES 1/16 x 45°.		TOLERANCES ARE NOT ACCUMULATIVE			
8. CENTERS PERMISSIBLE.					
9. DO NOT SCALE DRAWING.					
10. ALL WELDING TO CONFORM TO LATEST A.W.S. STANDARDS					

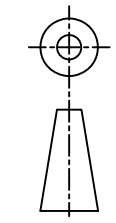
DRAWING INFORMATION		PROJECT NUMBER	
NAME	DATE	PROJECT NUMBER	DRAWING NUMBER
AD	11.14.22	109	109.01.00.00
CHECKED	KH		SHEET
APPROVED	KH		1 OF 4
OSI		TITLE	REVISION
		TELEMETRY CONTROL BOX ASSEMBLY	C



REVISIONS				
ZONE	REV	DESCRIPTION	DATE	APPROVED
	C	HARDWARE ADDED	06.08.23	

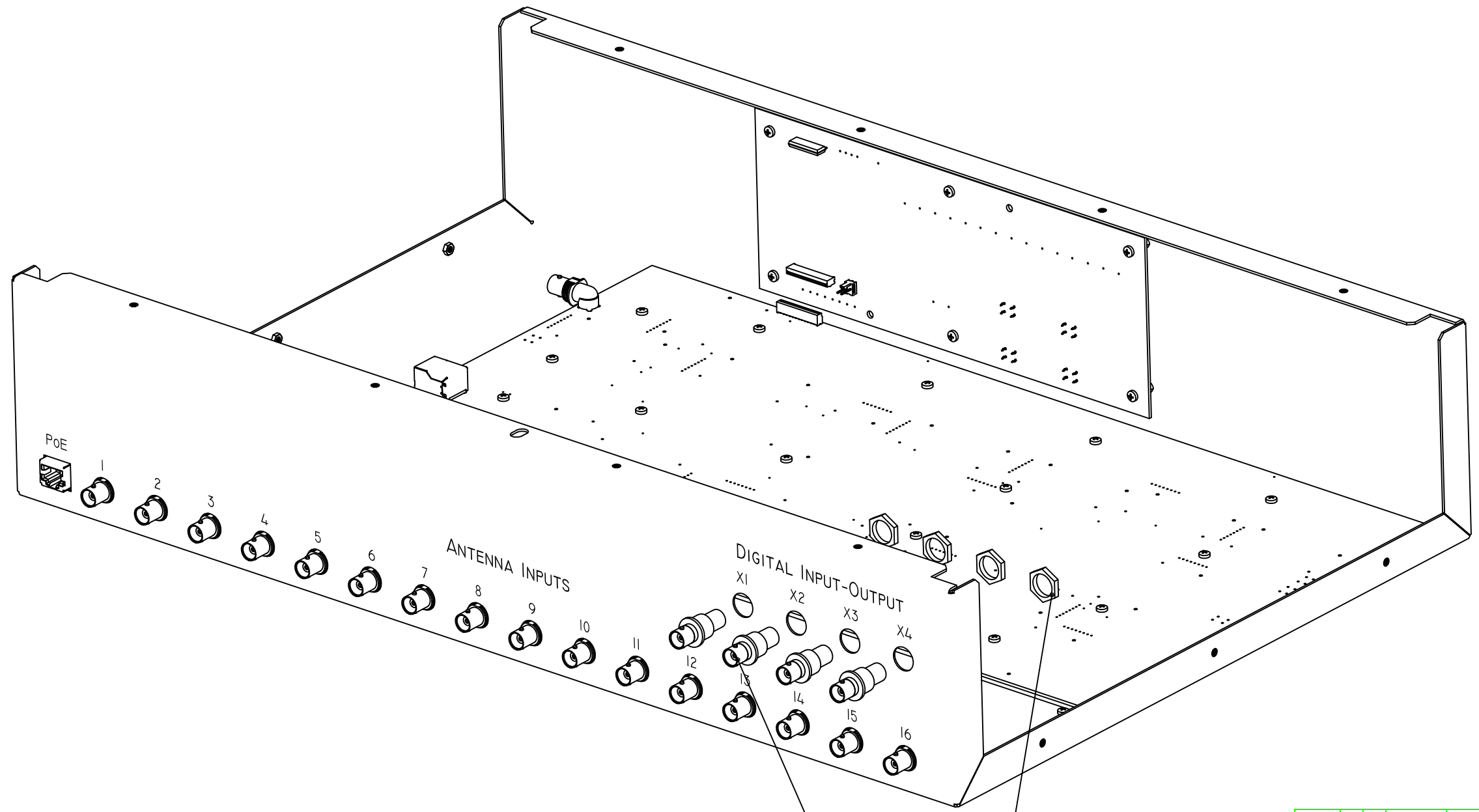


FIND/REF.#	QTY.	U.M.	PART NAME	MATERIAL	PART DESCRIPTION	REF. SHEET/DWG.
PARTS LIST						
UNLESS OTHERWISE SPECIFIED:				PERMISSIBLE VARIATION IN INCH DIMENSIONS WITHOUT TOLERANCES		
1. DIMENSIONS ARE IN INCHES. 2. MACHINE SURFACES TO BE FLAT, SQUARE, PARALLEL & CONCENTRIC WITHIN .001 FOR 5 INCHES OR .001 TIR AS APPLICABLE. 3. MARK ALL DETAILS (EXEMPT COMMERCIAL PARTS) WITH DWG. & ITEM NUMBER. 4. BREAK ALL SHARP CORNERS .01 x 45° CHAMFER. 5. FILLETS SHOWN SHARP = .04 RAD. 6. TAPPED HOLES UNIFIED CLASS 2B THREAD, MIN DEPTH 1.5 x DIA. 7. C'SINK BORED & REAMED HOLES 1/16 x 45°. CENTERS PERMISSIBLE. 8. DO NOT SCALE DRAWING. 9. DO NOT SCALE DRAWING. 10. ALL WELDING TO CONFORM TO LATEST A.W.S. STANDARDS				FABRICATION TOLERANCES BELOW 12 ±.010 DECIMAL PLACES X & X.X .XXX .XXXX 12 TO 60 ±.013 BELOW 18 ±.015 ±.010 ±.005 60 TO 180 ±.020 18 TO 48 ±.030 ±.020 ±.010 OVER 180 ±.030 OVER 48 ±.045 ±.030 ±.015 ANGLE TOLERANCE ±0.5° ANGLE TOLERANCE ±0.1°		
				SURFACE TEXTURE $\sqrt{125}$		
NEXT ASSY	QTY.	DRAWING INFORMATION		SIZE		SCALE
		NAME	DATE	D	15	
		DRAWN	AD 11.14.22	PROJECT NUMBER		
		CHECKED	KH	109		
		APPROVED	KH	DRAWING NUMBER		
		OSI		109.01.00.00		
		TITLE		SHEET		REVISION
		TELEMETRY CONTROL BOX ASSEMBLY		2 OF 4		C



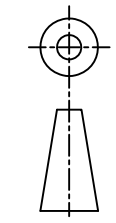
6 5 4 3 2 1

REVISIONS				
ZONE	REV	DESCRIPTION	DATE	APPROVED
	C	HARDWARE ADDED	06.08.23	

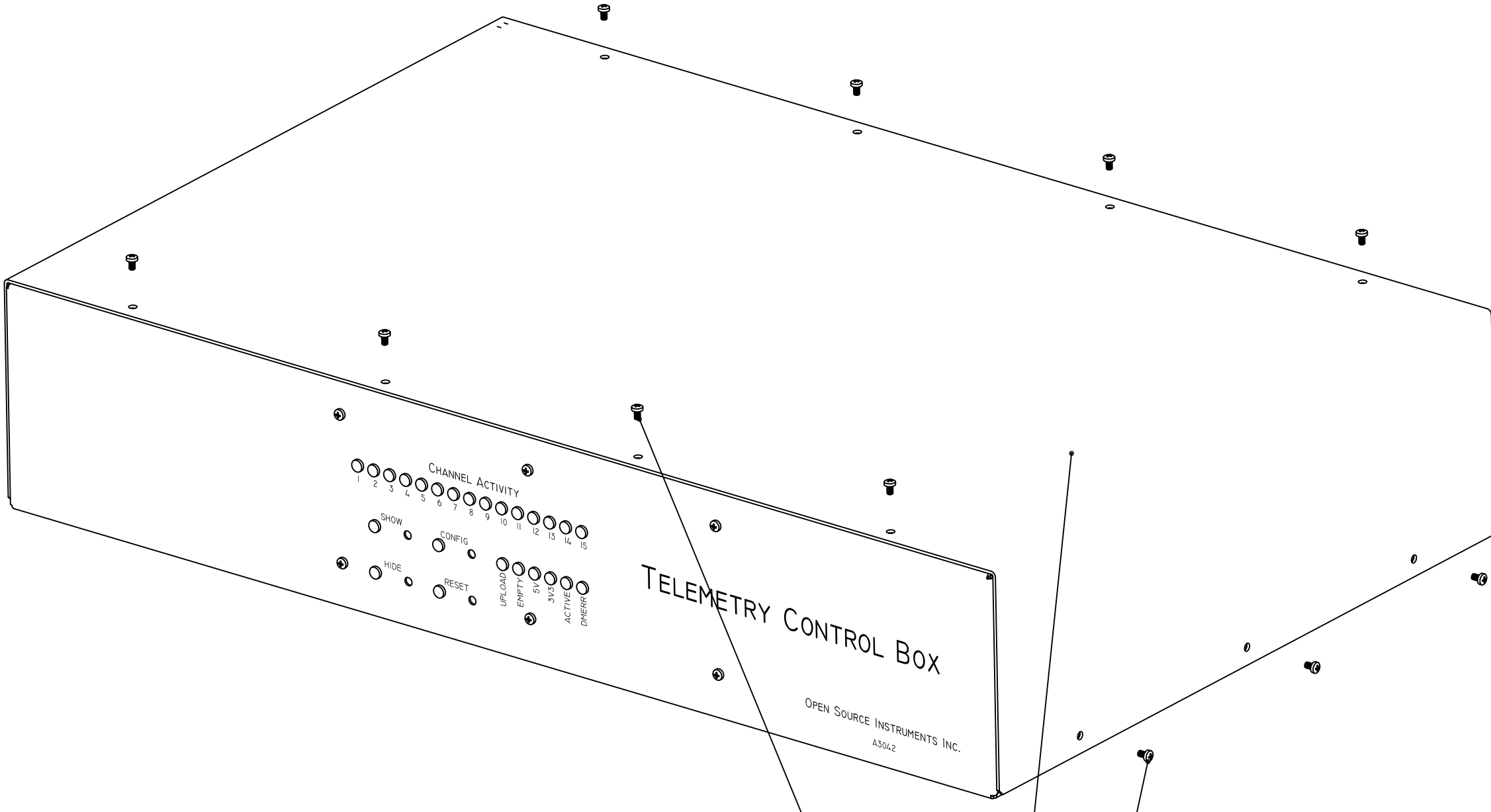


6 5 4 3 2 1

FIND/REF.#	QTY.	U.M.	PART NAME	MATERIAL	PART DESCRIPTION	REF. SHEET/DWG.			
PARTS LIST									
UNLESS OTHERWISE SPECIFIED:				PERMISSIBLE VARIATION IN INCH DIMENSIONS WITHOUT TOLERANCES					
1. DIMENSIONS ARE IN INCHES. 2. MACHINE SURFACES TO BE FLAT, SQUARE, PARALLEL & CONCENTRIC WITHIN .001 FOR 5 INCHES OR .001 TIR AS APPLICABLE. 3. MARK ALL DETAILS (EXEMPT COMMERCIAL PARTS) WITH DWG. & ITEM NUMBER. 4. BREAK ALL SHARP CORNERS .01 x 45° CHAMFER. 5. FILLETS SHOWN SHARP = .04 RAD. 6. TAPPED HOLES: UNIFIED CLASS 2B THREAD, MIN DEPTH 1.5 x DIA. 7. C'SINK BORED & REAMED HOLES 1/16 x 45°. 8. CENTERS PERMISSIBLE. 9. DO NOT SCALE DRAWING. 10. ALL WELDING TO CONFORM TO LATEST A.W.S. STANDARDS				FABRICATION TOLERANCES		MACHINING TOLERANCES			
				BELOW 12	±0.10	BELOW 18	±0.015	±0.010	±0.005
				12 TO 60	±0.13	18 TO 48	±0.030	±0.020	±0.010
				60 TO 180	±0.20	OVER 48	±0.045	±0.030	±0.015
				OVER 180	±0.30	ANGLE TOLERANCE ±0.5°		ANGLE TOLERANCE ±0.1°	
SURFACE TEXTURE $\sqrt{125}$ TOLERANCES ARE NOT ACCUMULATIVE									
NEXT ASSY	QTY.	DRAWING INFORMATION		SIZE		SCALE			
		NAME	DATE	D	15				
		DRAWN	AD 11.14.22	Open Source Instruments Inc.		PROJECT NUMBER			
		CHECKED	KH			109			
		APPROVED	KH	TITLE		DRAWING NUMBER			
				OSI		109.01.00.00			
				TELEMETRY CONTROL BOX ASSEMBLY		SHEET			
						3 OF 4			
						REVISION			
						C			



REVISIONS				
ZONE	REV	DESCRIPTION	DATE	APPROVED
	C	HARDWARE ADDED	06.08.23	



TELEMETRY CONTROL BOX

OPEN SOURCE INSTRUMENTS INC.
A304.2

FIND/REF.#	QTY.	U.M.	PART NAME	MATERIAL	PART DESCRIPTION	REF. SHEET/DWG.			
PARTS LIST									
UNLESS OTHERWISE SPECIFIED:				PERMISSIBLE VARIATION IN INCH DIMENSIONS WITHOUT TOLERANCES					
1. DIMENSIONS ARE IN INCHES. 2. MACHINE SURFACES TO BE FLAT, SQUARE, PARALLEL & CONCENTRIC WITHIN .001 FOR 5 INCHES OR .001 TIR AS APPLICABLE. 3. MARK ALL DETAILS (EXEMPT COMMERCIAL PARTS) WITH DWG. & ITEM NUMBER. 4. BREAK ALL SHARP CORNERS .01 x 45° CHAMFER. 5. FILLETS SHOWN SHARP = .04 RAD. 6. TAPPED HOLES: UNIFIED CLASS 2B THREAD, MIN DEPTH 1.5 x DIA. 7. C'SINK BORED & REAMED HOLES 1/16 x 45°. 8. CENTERS PERMISSIBLE. 9. DO NOT SCALE DRAWING. 10. ALL WELDING TO CONFORM TO LATEST A.W.S. STANDARDS				FABRICATION TOLERANCES		MACHINING TOLERANCES			
				BELOW 12	±0.10	DECIMAL PLACES X & X.X	X.XX	X.XXX	X.XXX
				12 TO 60	±0.13	BELOW 18	±0.015	±0.010	±0.005
				60 TO 180	±0.20	18 TO 48	±0.030	±0.020	±0.010
OVER 180	±0.30	OVER 48	±0.045	±0.030	±0.015				
				ANGLE TOLERANCE ±0.5°		ANGLE TOLERANCE ±0.1°			
SURFACE TEXTURE $\sqrt{125}$ TOLERANCES ARE NOT ACCUMULATIVE									

DRAWING INFORMATION				SIZE		SCALE	
NAME	DATE	SIZE	SCALE				
DRAWN AD	11.14.22	D	1:5	Open Source Instruments Inc. PROJECT NUMBER 109 DRAWING NUMBER 109.01.00.00 SHEET 4 OF 4 REVISION C			
CHECKED KH							
APPROVED KH							
OSI				TITLE TELEMETRY CONTROL BOX ASSEMBLY			

